



Forest Service News Release

Project Contact: Eric Nicita, eric.nicita@usda.gov

Visitor Information: 530-644-2324

Wrights Lake Travel Advisory:

Temporary Closure on Wrights Tie Road Planned After Labor Day During Meadow Restoration Project

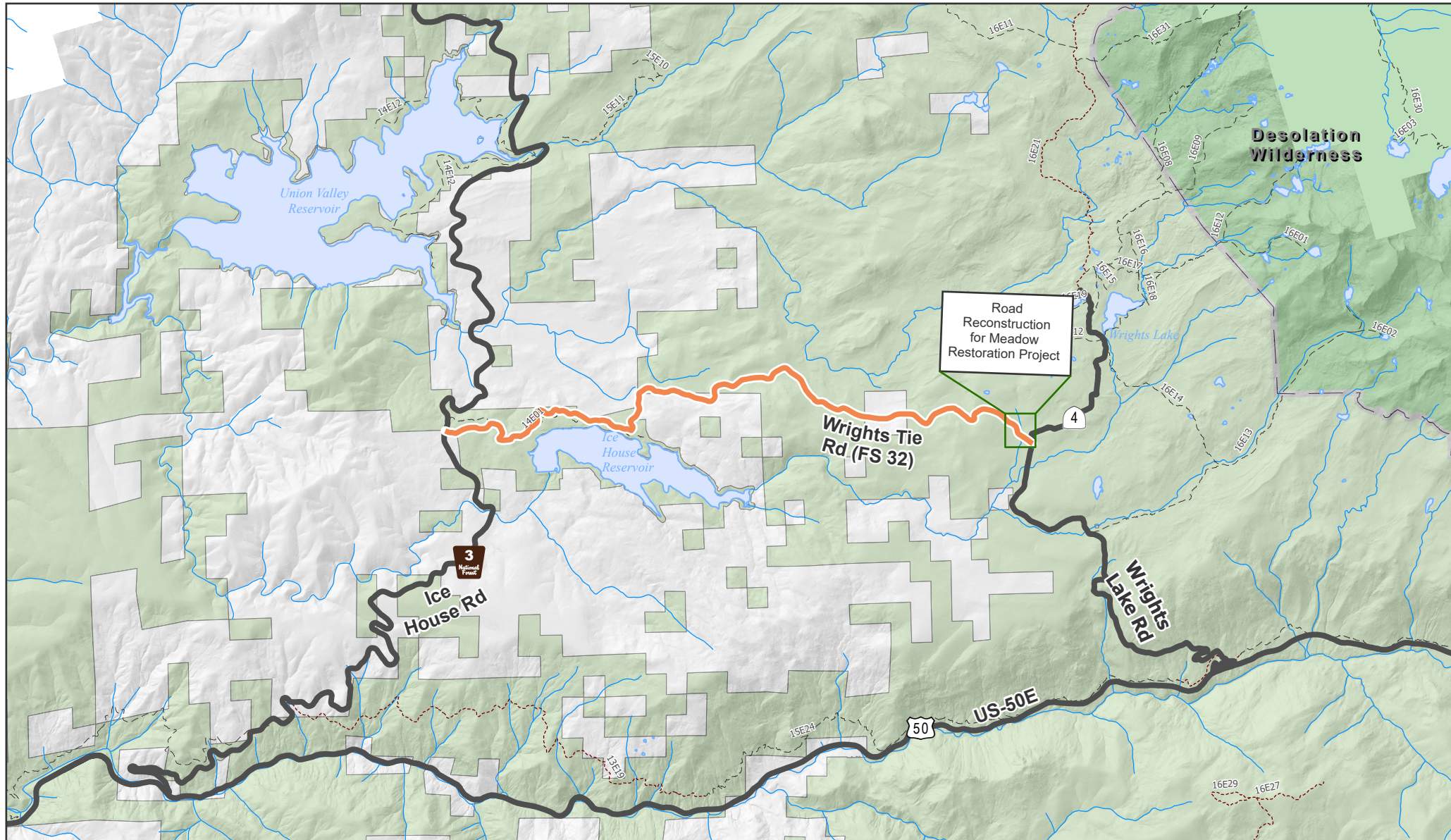
Placerville, Calif., August 2, 2023— Beginning after Labor Day, on September 5, a ½ mile section at the east end of Wrights Tie Road (11N37/FS Rd 32), near the intersection with Wrights Lake Road (11N26/FS Rd 4) will be impassable for approximately a month while heavy equipment is being used to reconstruct this section of road as part of the Wilson Meadow Restoration Project. While the road is being reconstructed, a temporary closure will be in place for this ½ mile section. Visitors will need to access Wrights Lake Road from Highway 50 to get to Wrights Lake and the surrounding Wrights Lake Recreation Area. It will not be possible to cross over on Wrights Tie Road from Ice House Road in the Crystal Basin. See map attached.

The reconstruction on Wrights Tie Road will replace the section of road that crosses the creek and dips suddenly at the head of Wilson Meadow. This section will be elevated; culverts will be installed; and the road will be resurfaced to improve the flow of water to the meadow.

Wilson Meadow is an approximately 60 acre meadow located on the south side of the Wrights Tie Road at the intersection with Wrights Lake Road. South Fork Silver Creek and a tributary of this creek run through Wilson Meadow. The original meadow was a wetland, but historic impacts such as compaction and water diversion altered the flow of surface and ground water. As a result, water rapidly drains from the meadow instead of being stored within it. Restoring meadow conditions improves the water supply, maintains lower water temperatures, provides meadow wetland habitat, and accumulates organic material which stores carbon.








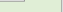

The project will be accomplished in partnership with American Rivers. For more information about the Wrights Tie Road reconstruction or restoration activities, please contact Eric Nicita, Soil Scientist for the Eldorado National Forest at eric.nicita@usda.gov. For assistance with travel planning, call the Visitor Information team at 530-644-2324.

[See map next page]



USDA  **Forest Service**
U.S. DEPARTMENT OF AGRICULTURE

Eldorado National Forest
Placerville / Pacific
Ranger District
Wrights Tie Road
Advisory

-  Road Work Advisory
-  Road
-  Non-Motorized Trail
-  Motorized Trail
-  River
-  Waterbody
-  Administrative Boundary
-  USDA Forest Service
-  Non Forest Service

Disclaimer:

The USDA Forest Service uses the most current and complete data available. GIS data and product accuracy may vary. They may be developed from sources of differing accuracy, accurate only at certain scales, based on modeling or interpretation, incomplete while being created or revised, etc. Using GIS products for purposes other than those for which they were created, may yield inaccurate or misleading results.

The Forest Service reserves the right to correct, update, modify, or replace, GIS products without notification. For more information, contact:

Eldorado National Forest
100 Forni Road
Placerville CA 95667-5310
(530)622-5061

